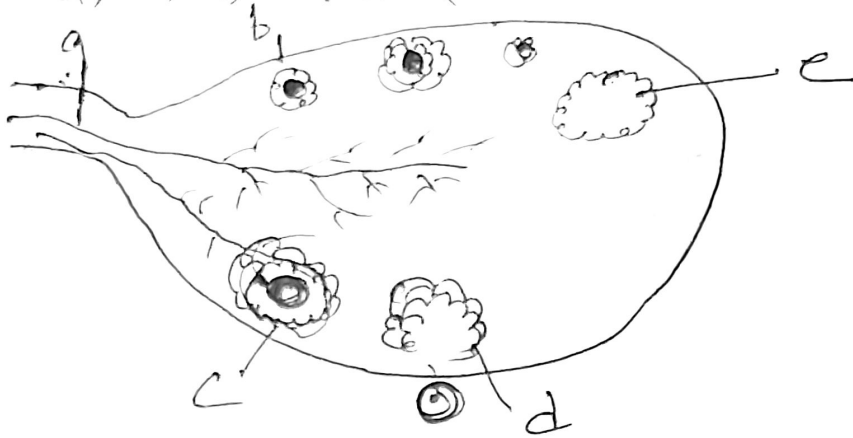


Biology Human Reproduction

- Q1. (a) Draw a section view of seminiferous tubules of a human. Label the following cells in the seminiferous tubule.
- (i) Cells that divide by mitosis to increase their number
 - (ii) Cells that undergo Meiosis - I & Meiosis - II
 - (iii) Cell that help in the process of spermiogenesis
- (b) Mention the role of Leydig cells.
- Q2. Explain the hormonal control of spermatogenesis in human.
- Q3. Draw a diagram of human sperm and label the following part and write their functions.
- (a) Acrosome (b) Nucleus (c) Middle piece.
- Q4. Explain the step in the formation of an ovum from an oogonium in human.
- Q5. Explain the event that follow upto fertilization when the sperm come in contact with the ovum in the fallopian tube of a female.
- Q6. Name the hormones produce only during pregnancy in a human female. Mention their source organ.
- Q7. Name the stage of human embryo at which it gets implanted. Explain the process, implantation.
- Q8. Name and explain the role of inner and middle walls of the human uterus.
- Q9. Write function of the following
- (i) Corpus luteum (ii) Endometrium (iii) Acrosome (iv) Sperm tail
 - (v) Fimbriae.
- Q10. Write the specific location and the functions of the following cell in human males.
- (i) Leydig cell (ii) Sertoli cells (iii) Primary Spermatocyte.
- Q11. (a) Where does spermatogenesis occur in human testes? Describe the process of spermatogenesis upto the formation of sperm.

(b) Trace the path of Spermatozoa from testes upto the ejaculatory duct only.

Q12. (a) Given below is the T.S. of human ovary. Identify ~~the~~ a, b, c, d, and e



(b) Explain the changes the primary oocyte undergoes while in different follicular stages before ovulation.

Q13. Describe the role of Pituitary and ovarian hormones during the menstrual cycle in human female.

Q14. During the reproductive cycle of human female, when, where and how does a placenta develop? What is the function of Placenta during pregnancy and embryo development?

Q15. Mention the fate of Corpus luteum and its effect on the uterus in absence of fertilisation of the ovum in human female.

Q16. Differentiate between menarche and menopause.

Q17. Name the source of gonadotropins in human female. Explain the changes brought about in the ovary by these hormones during menstrual cycle.

Q18. When and where chorionic villi appear in human? State their function.

Q19. State the role of oxytocin in parturition. What triggers its release from the pituitary?